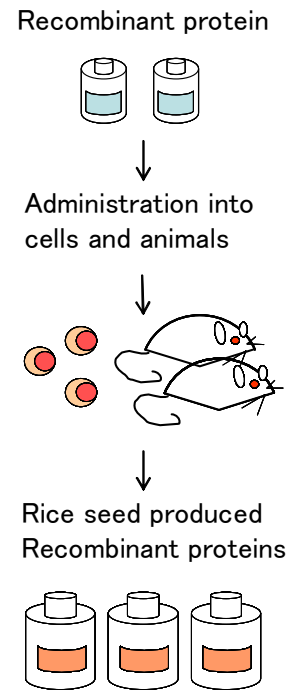
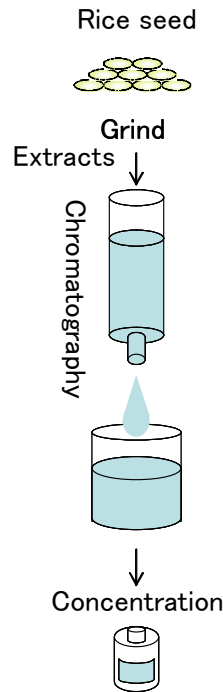
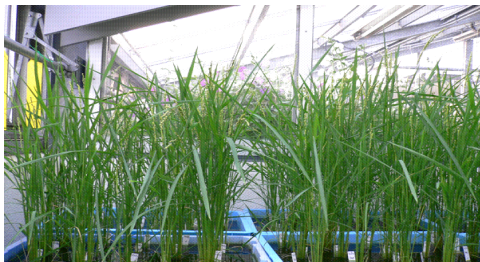
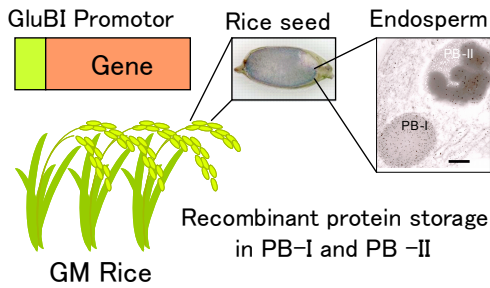
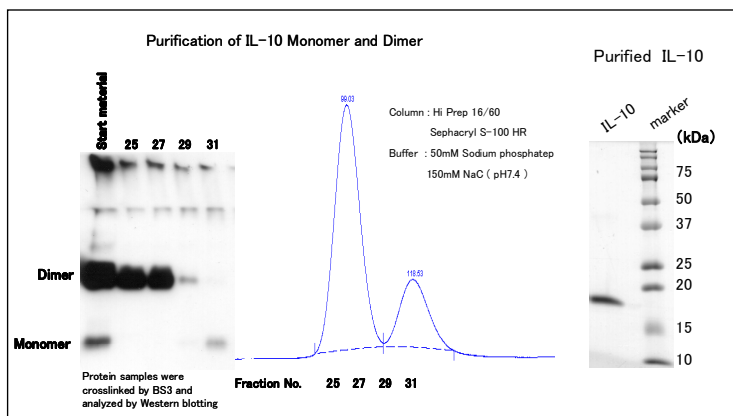
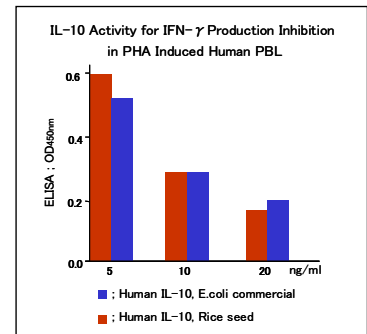
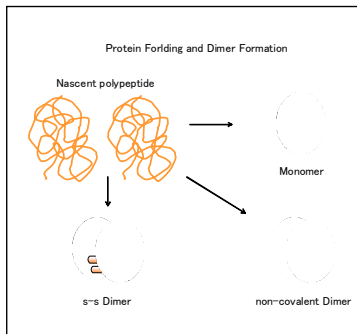
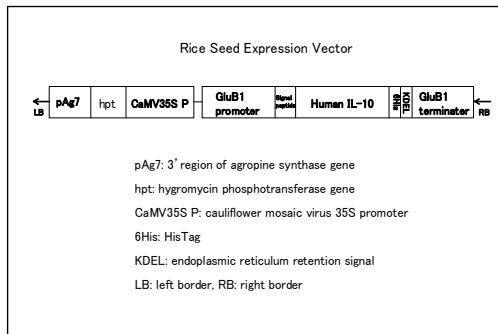


# Recombinant Protein Production in Rice Seed

Genetic Transformation of Rice → Protein Purification → Functional Assay



## Recombinant Human IL-10 Production by Using GM Rice Seed



Human IL-10  
Preventec Inc

Purification of IL-10

|                            |               |
|----------------------------|---------------|
| Single Rice Seed           | 20 mg         |
| IL-10 Quantity/Single Seed | 10-20 $\mu$ g |
| Starting Material          | 40 mg         |
| Purified IL-10             | 2-4 mg        |
| Recovery                   | 6-10 %        |